

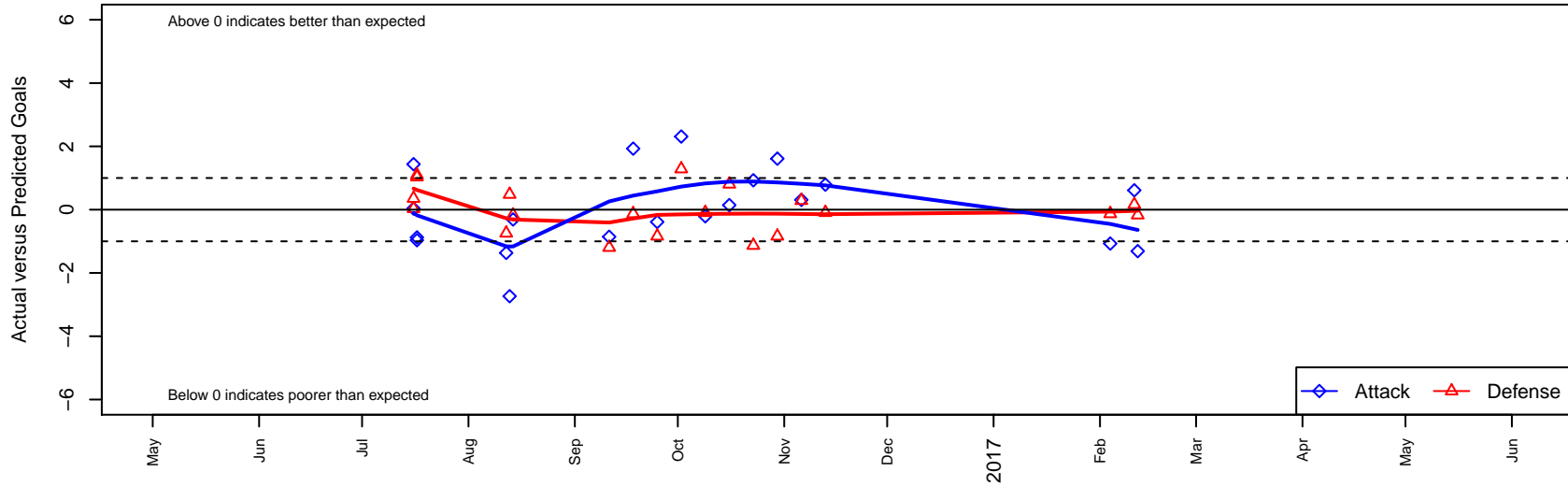
# TC United Navy B01

Thurston County United  
 Lacey, WA  
 B01 total strength=1325  
 attack=6.7 defense=5.66  
 fall league = PSPL Classic 1 U16  
 notes= McInroy 2016

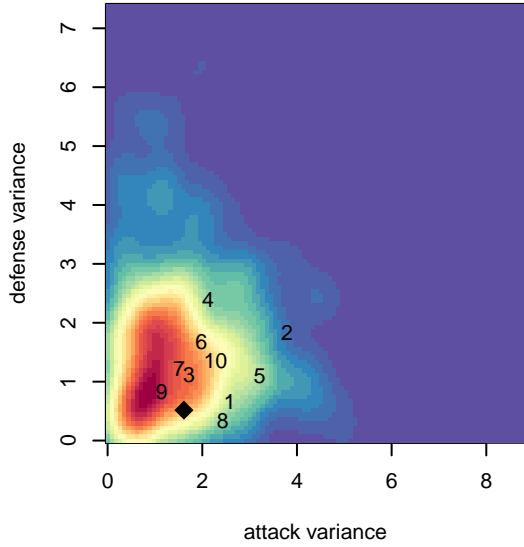
alt names used:  
 THURSTON COUNTY UNITED  
 TC United B01 Navy-McInroy  
 THURSTON COUNTY UNITED TC UNITED B01  
 TC UNITED B01-NAVY - MCINROY (WA)

Venues played:  
 2016 KITG BU16-17 Green  
 2016 Central WA Super Cup U16 Gold  
 2016 PSPL Classic 1 U16  
 2016 WA Cup HS Silver U16

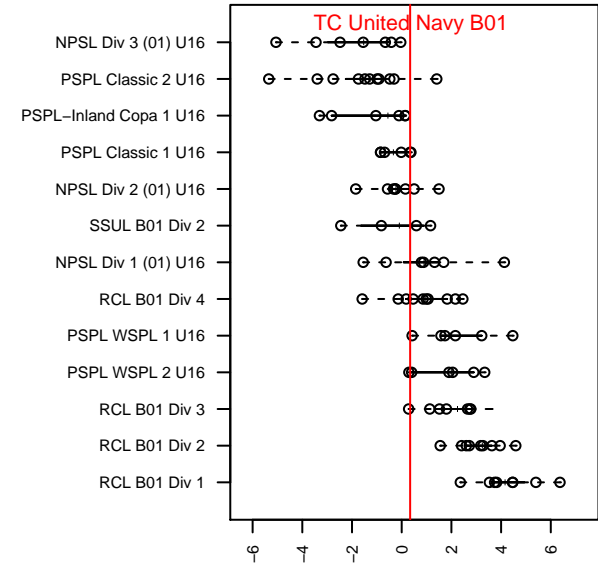
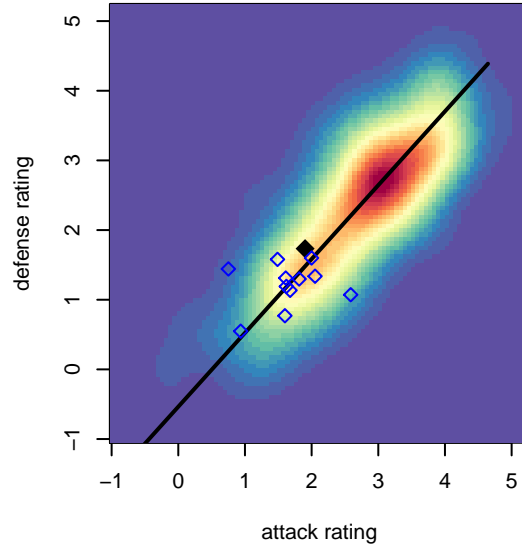
**TC United Navy B01**  
 Dots are actual minus expected GF (blue circles) and GA (red triangles).  
 Blue line is smoothed change in attack strength. Red is smoothed change in defense strength.



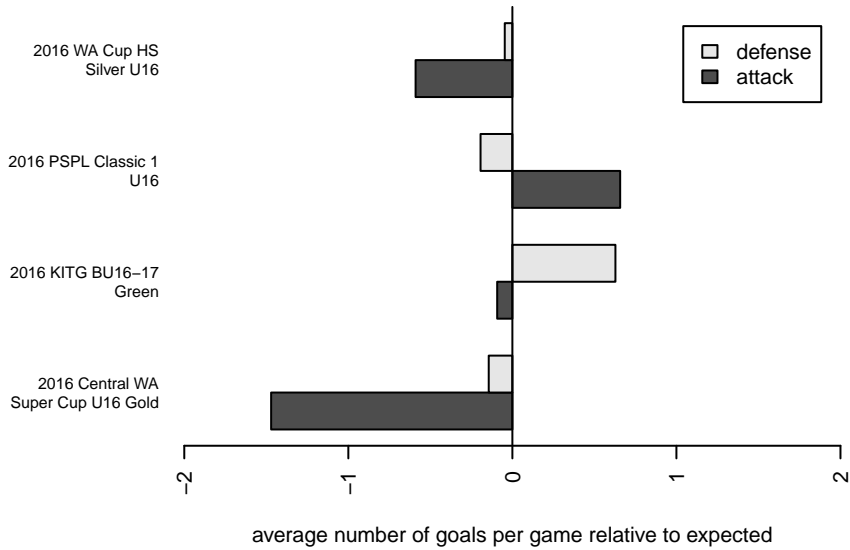
**attack and defense variance (black dot)  
relative to other teams  
and top 10 in region**



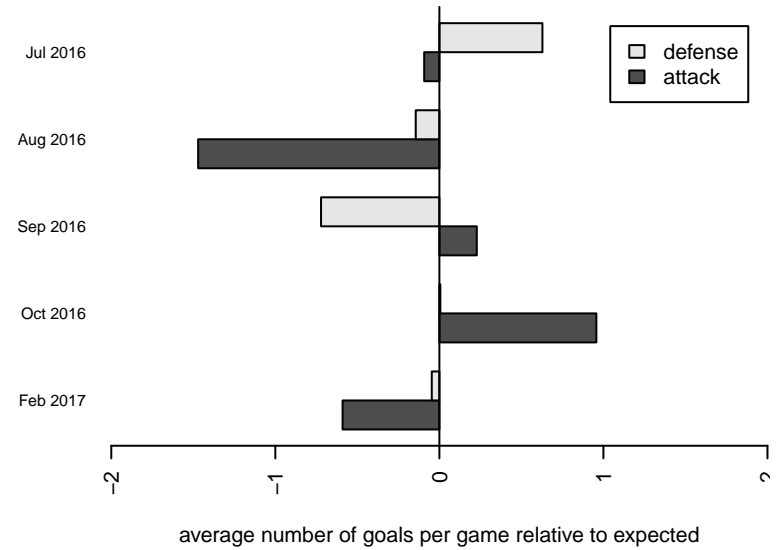
**attack and defense rating  
relative to others at age  
and all opponents in last 13 months**



**Performance relative to 13 month average**



**Performance relative to 13 month average**



| <b>date</b> | <b>home</b>                |   | <b>away</b>                    |   | <b>venue</b>                       | <b>pred.home</b> | <b>pred.away</b> |
|-------------|----------------------------|---|--------------------------------|---|------------------------------------|------------------|------------------|
| 2017-02-12  | MVP Rapids Navy B01        | 1 | TC United Navy B01             | 0 | 2016 WA Cup HS Silver U16          | 0.83             | 1.31             |
| 2017-02-11  | TC United Navy B01         | 3 | FC Edmonds Riptide B01         | 2 | 2016 WA Cup HS Silver U16          | 2.39             | 2.16             |
| 2017-02-04  | TC United Navy B01         | 1 | Emerald City FC Green B01      | 1 | 2016 WA Cup HS Silver U16          | 2.07             | 0.87             |
| 2016-11-13  | TC United Navy B01         | 3 | ISC Gunners B B01              | 1 | 2016 PSPL Classic 1 U16            | 2.21             | 0.91             |
| 2016-11-06  | Nortac Sparta Red B01      | 1 | TC United Navy B01             | 2 | 2016 PSPL Classic 1 U16            | 1.29             | 1.69             |
| 2016-10-30  | TC United Navy B01         | 4 | FC Edmonds Riptide B01         | 3 | 2016 PSPL Classic 1 U16            | 2.39             | 2.16             |
| 2016-10-23  | Emerald City FC Green B01  | 2 | TC United Navy B01             | 3 | 2016 PSPL Classic 1 U16            | 0.87             | 2.07             |
| 2016-10-16  | TC United Navy B01         | 2 | Shoreline Sportsverrou B01     | 0 | 2016 PSPL Classic 1 U16            | 1.86             | 0.81             |
| 2016-10-09  | ISC Gunners B B01          | 1 | TC United Navy B01             | 2 | 2016 PSPL Classic 1 U16            | 0.91             | 2.21             |
| 2016-10-02  | TC United Navy B01         | 4 | Nortac Sparta Red B01          | 0 | 2016 PSPL Classic 1 U16            | 1.69             | 1.29             |
| 2016-09-25  | FC Edmonds Riptide B01     | 3 | TC United Navy B01             | 2 | 2016 PSPL Classic 1 U16            | 2.16             | 2.39             |
| 2016-09-18  | TC United Navy B01         | 4 | Emerald City FC Green B01      | 1 | 2016 PSPL Classic 1 U16            | 2.07             | 0.87             |
| 2016-09-11  | Shoreline Sportsverrou B01 | 2 | TC United Navy B01             | 1 | 2016 PSPL Classic 1 U16            | 0.81             | 1.86             |
| 2016-08-14  | MVP Rapids Navy B01        | 1 | TC United Navy B01             | 1 | 2016 Central WA Super Cup U16 Gold | 0.83             | 1.31             |
| 2016-08-13  | TC United Navy B01         | 1 | Highline Premier Heat Blue B01 | 0 | 2016 Central WA Super Cup U16 Gold | 3.73             | 0.48             |
| 2016-08-12  | Gala FC B01                | 2 | TC United Navy B01             | 0 | 2016 Central WA Super Cup U16 Gold | 1.26             | 1.37             |
| 2016-07-17  | TC United Navy B01         | 1 | FME Xtreme B01                 | 0 | 2016 KITG BU16-17 Green            | 1.88             | 1.10             |
| 2016-07-17  | SGESC Fusion B00           | 0 | TC United Navy B01             | 2 | 2016 KITG BU16-17 Green            | 1.03             | 2.97             |
| 2016-07-16  | RSA Elite B01              | 0 | TC United Navy B01             | 3 | 2016 KITG BU16-17 Green            | 0.35             | 1.56             |
| 2016-07-16  | TC United Navy B01         | 3 | SGESC Fusion B00               | 1 | 2016 KITG BU16-17 Green            | 2.97             | 1.03             |